

SOFTWARE DRIVER INSTALLATION

Max OS X Installation

NOTE: Driver installation is not required for systems using Mac OS 10.1.2 or above. Simply connect the card reader and access the reader by clicking the “Untitled” HDD icon located on your Desktop.

Windows XP & Windows ME

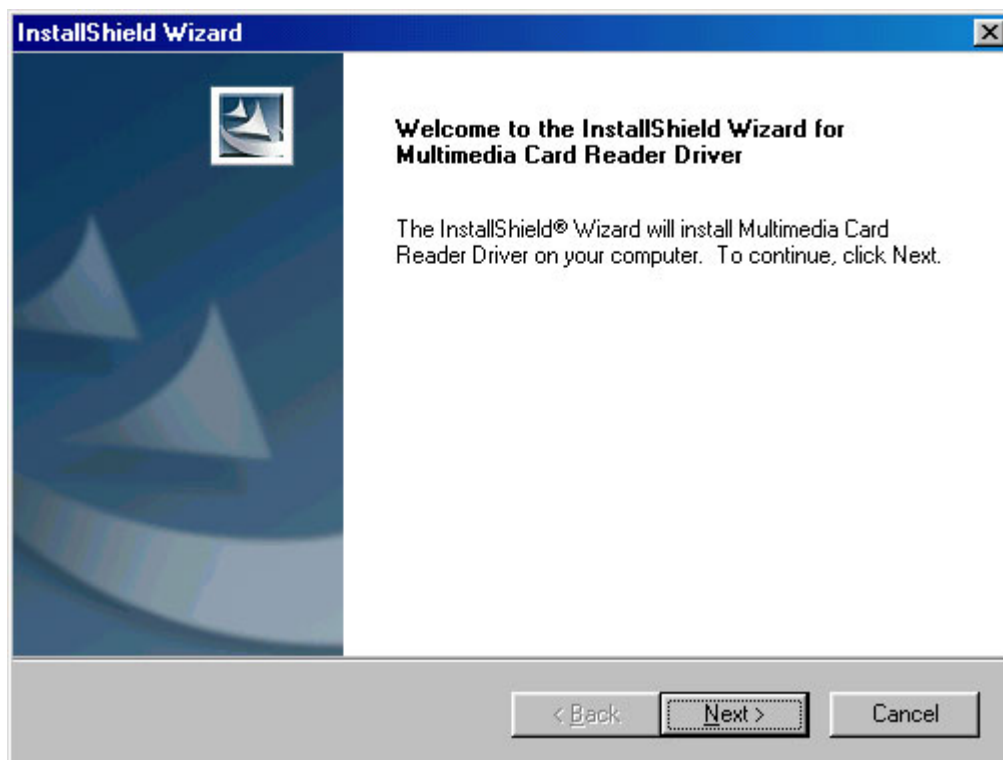
Driver installation is not required for Windows XP and Windows Me. Simply connect the card reader and access the reader by using the “Removable Disk” icon in “My Computer”.

Windows 98

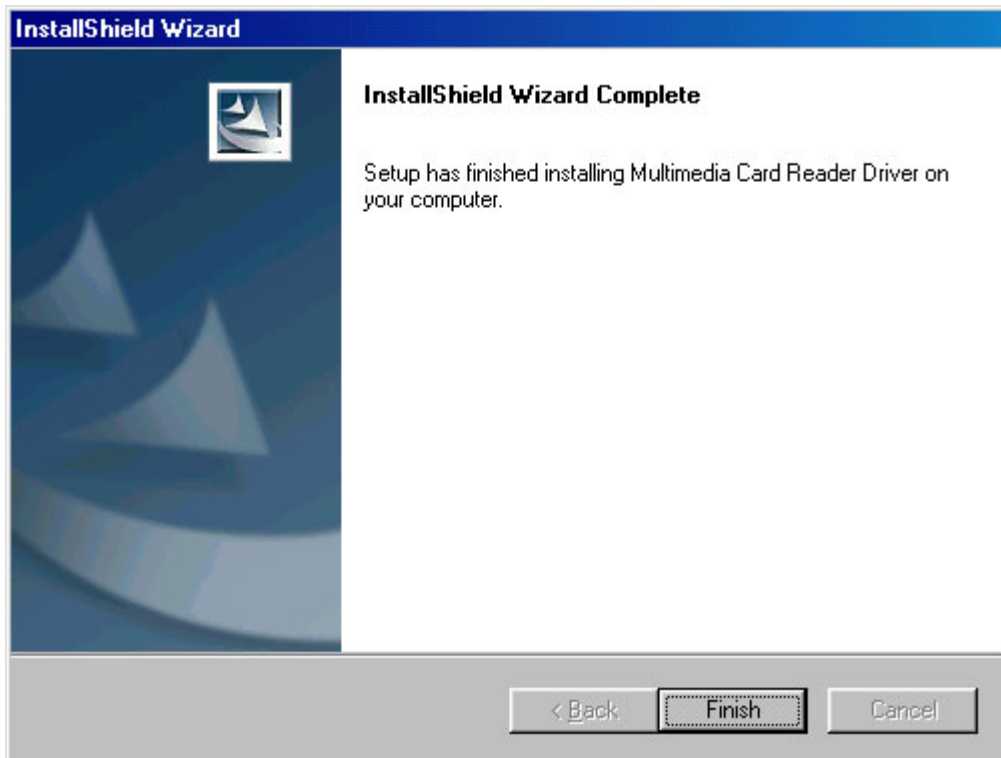
NOTE: Please make sure you install the software driver before connecting your card reader to your computer.

The screenshots below may vary slightly from your computer screen.

1. Download the driver by [clicking here](#) and execute it.
2. Setup will commence automatically. Click on “Next” to resume.



3. Congratulations! The installation is now complete. Click on “Finish” and connect the card reader to your computer.



6. Congratulations! The installation is now complete. You may connect and use the card reader after restarting your computer.